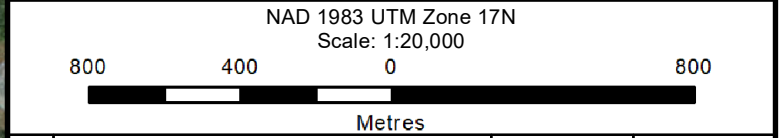


LEGEND

TC ACCESS INFORMATION	BOUNDARIES	TRANSPORTATION
Primary Access Route	Urban Area	Railway
Alternate Access Route	DND / Military	Highway
Access Route Start/End Point	Indian Reserve	Paved Road
Valve Site	Geographic Township	Gravel Road
Brushing/Spraying Start/End Point	UTM	Trail
Proposed Brushing/Spraying Area	LTM & STM	Overhead Powerline
Powerline Crossing	Park	Buried Powerline
Pipeline Crossing		TC Pipeline
Water Crossing		Foreign Pipeline
Cable Crossing		Buried Cable
Railway Crossing		Overhead Cable



**2024 N.ONT. BRUSHING/SPRAYING PROGRAM
ACCESS MAP FOR
MLV 112 TO 114 - 10.9km TO 14.6km
IN
SISK TOWNSHIP,
MUNICIPALITY OF TEMAGAMI,
NIPISSING DISTRICT**



Rev	Description	OR / CH / PM	Date
0	Original Issue	AS / JW / JW	Dec 11, 2024
-	-	-	-
-	-	-	-
-	-	-	-

GeoVerra File Name:
24-03961-011-AM-MLV112-114-10x9to14x6km-BrushSpray_R0

Client File Name:
E036840_MLV112-114_10x9to14x6km_BrushSpray_GV_AM_Rev0

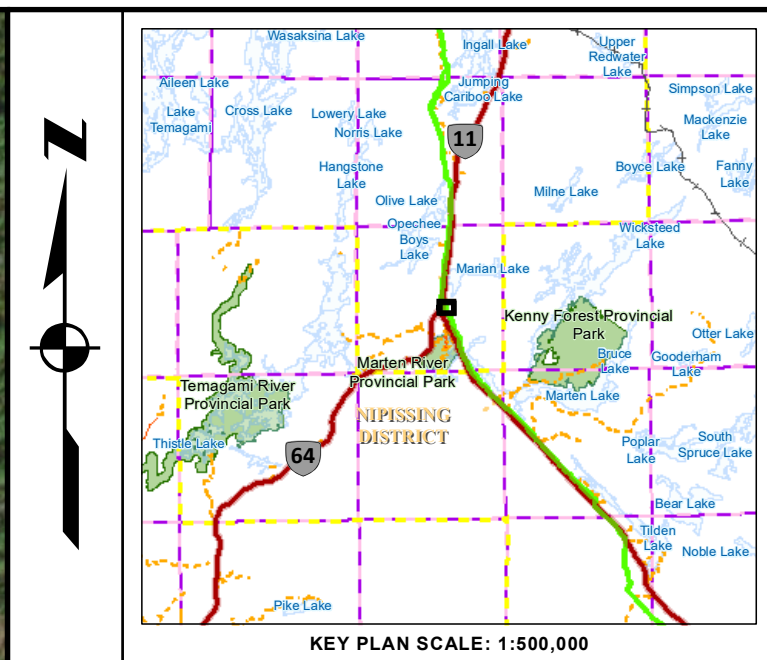
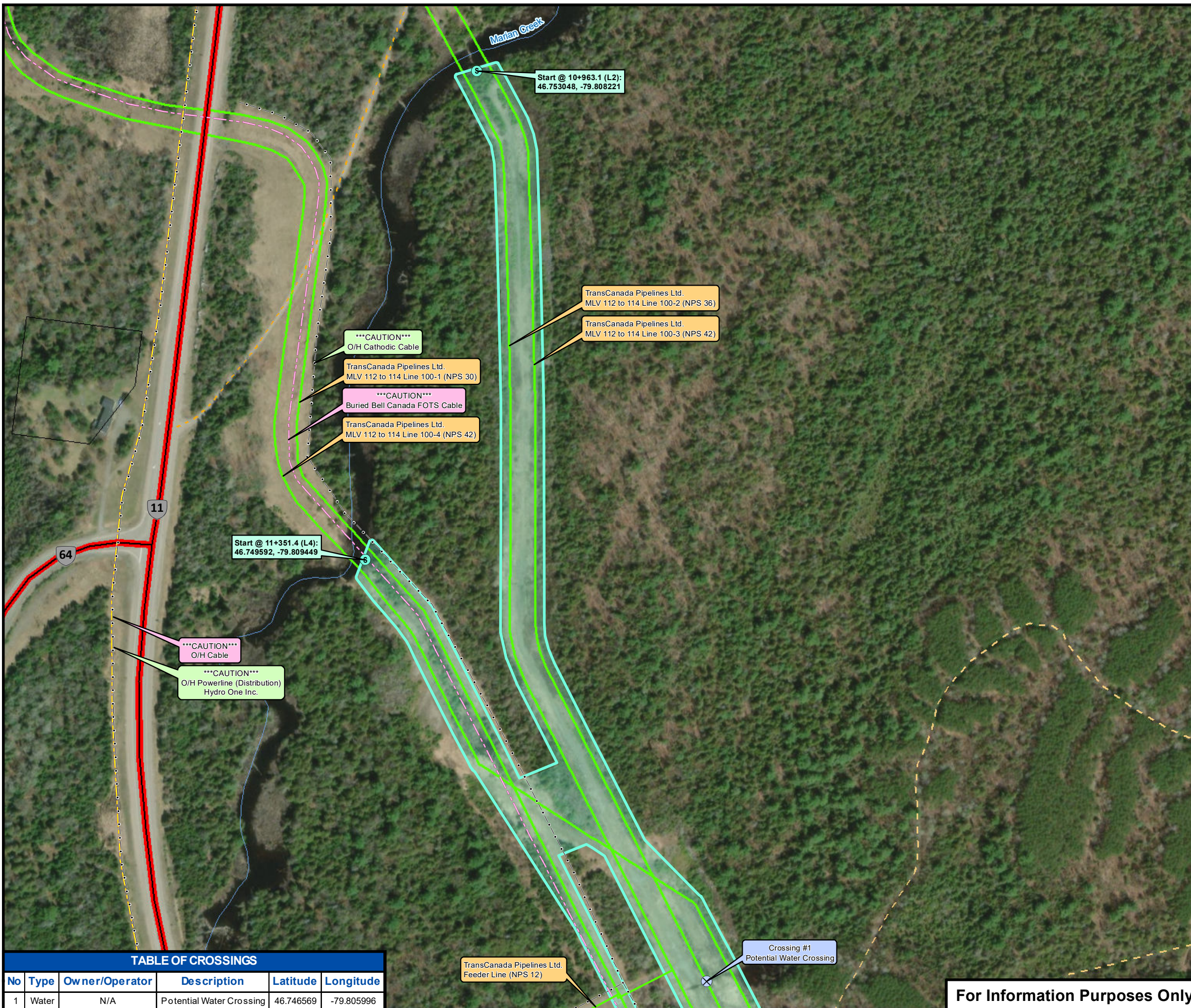
GeoVerra

403-234-7599 / www.geoverra.com/
700, 540 - 12th Ave SW, Calgary, Alberta, T2R 0H4

Job No.:	24-03961-011
Sheet	1 of 5
Revision	0

For Information Purposes Only

The information contained herein is compiled from various government and industry sources, subject to copyright, and includes but is not limited to: Source: Esri, Maxar, Earthstar Geographics, and the GIS User Community; ©2024 DigitalGlobe; ©2024 Department of Natural Resources Canada; ©2024 Land Information Ontario (LIO); ©2024 King's Printer for Ontario. All rights reserved. GeoVerra Inc. and its data suppliers provide no warranty regarding the accuracy or completeness of this information and assume no liability for the interpretation or use thereof.

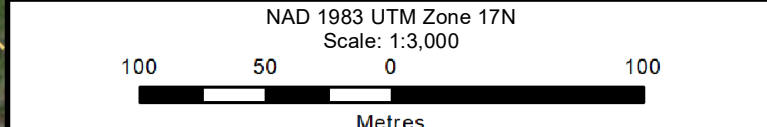


LEGEND

TC ACCESS INFORMATION	BOUNDARIES	TRANSPORTATION	UTILITIES
Primary Access Route	Urban Area	Railway	Overhead Powerline
Alternate Access Route	DND / Military	Highway	Buried Powerline
Access Route Start/End Point	Indian Reserve	Paved Road	TC Pipeline
Valve Site	Geographic Township	Gravel Road	Foreign Pipeline
Brushing/Spraying Start/End Point	UTM	Trail	Buried Cable
Proposed Brushing/Spraying Area	LTM & STM	Overhead Cable	
Powerline Crossing	Park		
Pipeline Crossing			
Water Crossing			
Cable Crossing			
Railway Crossing			



**2024 N.ONT. BRUSHING/SPRAYING PROGRAM
ACCESS MAP FOR
MLV 112 TO 114 - 10.9km TO 14.6km
IN
SISK TOWNSHIP,
MUNICIPALITY OF TEMAGAMI,
NIPISSING DISTRICT**



Rev	Description	OR / CH / PM	Date
0	Original Issue	AS / JW / JW	Dec 11, 2024
-	-	-	-
-	-	-	-
-	-	-	-

GeoVerra File Name:
24-03961-011-AM-MLV112-114-10x9to14x6km-BrushSpray_R0

Client File Name:
E036840_MLV112-114_10x9to14x6km_BrushSpray_GV_AM_Rev0

GeoVerra

403-234-7599 / www.geoverra.com /
700, 540 - 12th Ave SW, Calgary, Alberta, T2R 0H4

Job No.:
24-03961-011

Sheet
2 of 5

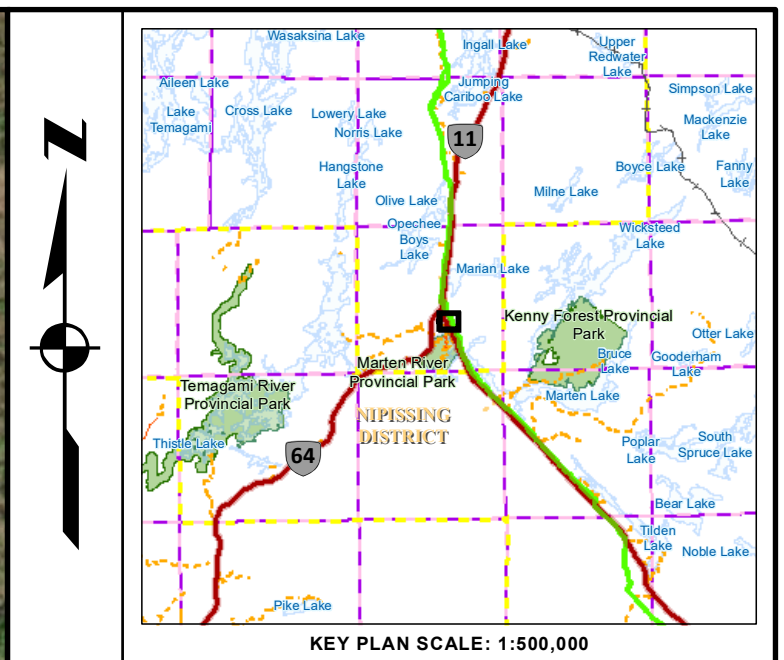
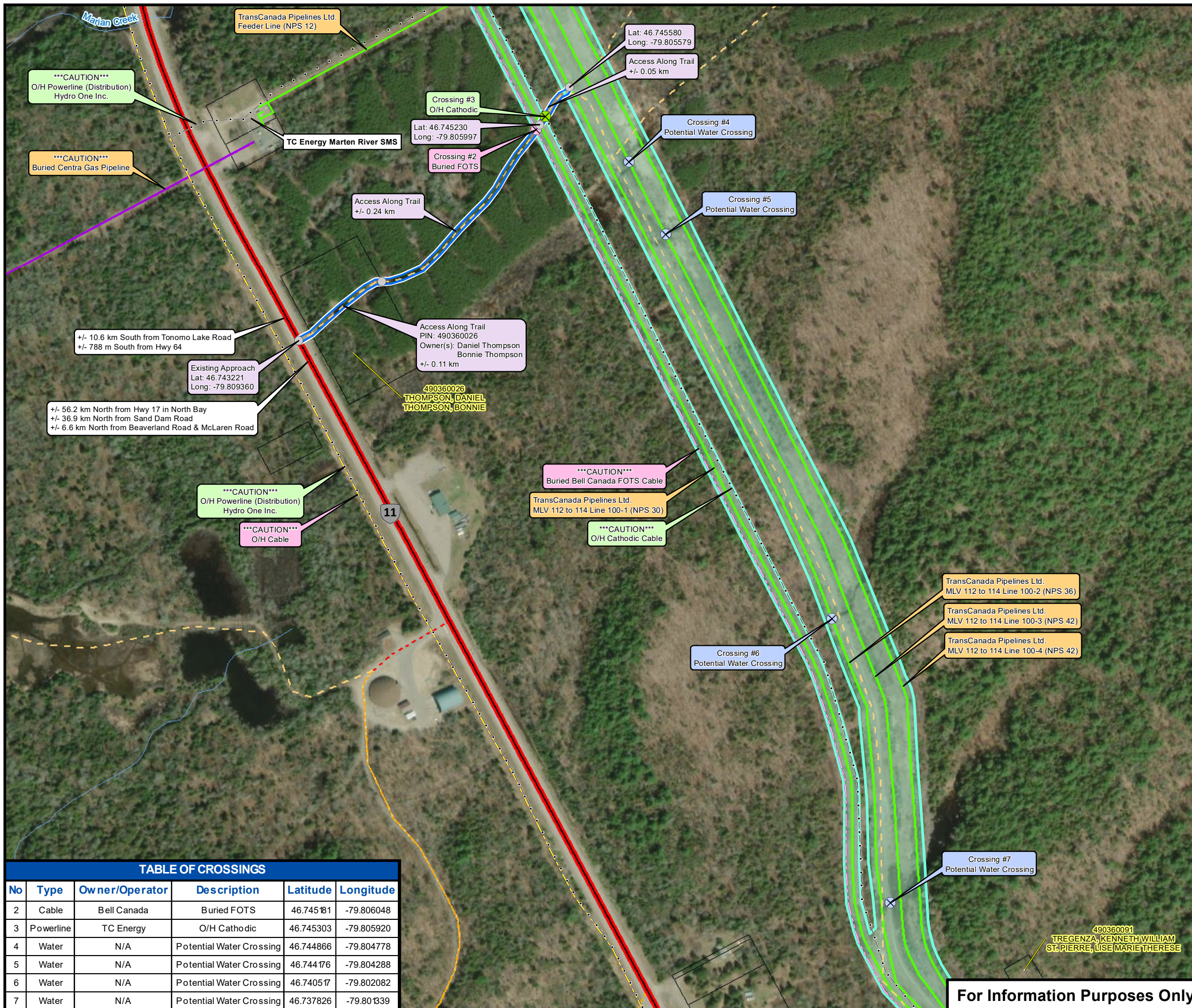
Revision
0

TABLE OF CROSSINGS

No	Type	Owner/Operator	Description	Latitude	Longitude
1	Water	N/A	Potential Water Crossing	46.746569	-79.805996

For Information Purposes Only

The information contained herein is compiled from various government and industry sources, subject to copyright, and includes but is not limited to: Source: Esri, Maxar, Earthstar Geographics, and the GIS User Community; ©2024 DigitalGlobe; ©2024 Department of Natural Resources Canada; ©2024 Land Information Ontario (LIO); ©2024 King's Printer for Ontario. All rights reserved. GeoVerra Inc. and its data suppliers provide no warranty regarding the accuracy or completeness of this information and assume no liability for the interpretation or use thereof.



LEGEND

TC ACCESS INFORMATION	BOUNDARIES	TRANSPORTATION
Primary Access Route	Urban Area	Railway
Alternate Access Route	DND / Military	Highway
Access Route Start/End Point	Indian Reserve	Paved Road
Valve Site	Geographic Township	Gravel Road
Brushing/Spraying Start/End Point	UTM	Trail
Proposed Brushing/Spraying Area	LTM & STM	Utilities
Powerline Crossing	Park	Overhead Powerline
Pipeline Crossing		Buried Powerline
Water Crossing		TC Pipeline
Cable Crossing		Foreign Pipeline
Railway Crossing		Buried Cable
		Overhead Cable



**2024 N.ONT. BRUSHING/SPRAYING PROGRAM
ACCESS MAP FOR
MLV 112 TO 114 - 10.9km TO 14.6km
IN
SISK TOWNSHIP,
MUNICIPALITY OF TEMAGAMI,
NIPISSING DISTRICT**

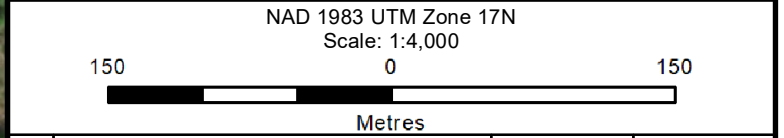


TABLE OF CROSSINGS					
No	Type	Owner/Operator	Description	Latitude	Longitude
2	Cable	Bell Canada	Buried FOTS	46.745181	-79.806048
3	Powerline	TC Energy	O/H Cathodic	46.745303	-79.805920
4	Water	N/A	Potential Water Crossing	46.744866	-79.804778
5	Water	N/A	Potential Water Crossing	46.744176	-79.804288
6	Water	N/A	Potential Water Crossing	46.740517	-79.802082
7	Water	N/A	Potential Water Crossing	46.737826	-79.801339

Rev	Description	OR / CH / PM	Date
0	Original Issue	AS / JW / JW	Dec 11, 2024
-	-	-	-
-	-	-	-
-	-	-	-

GeoVerra File Name:
24-03961-011-AM-MLV112-114-10x9to14x6km-BrushSpray_R0

Client File Name:
E036840_MLV112-114_10x9to14x6km_BrushSpray_GV_AM_Rev0

490360091
TREGENZA, KENNETH WILLIAM
ST-PIERRE, LISE MARIE THERESE

For Information Purposes Only

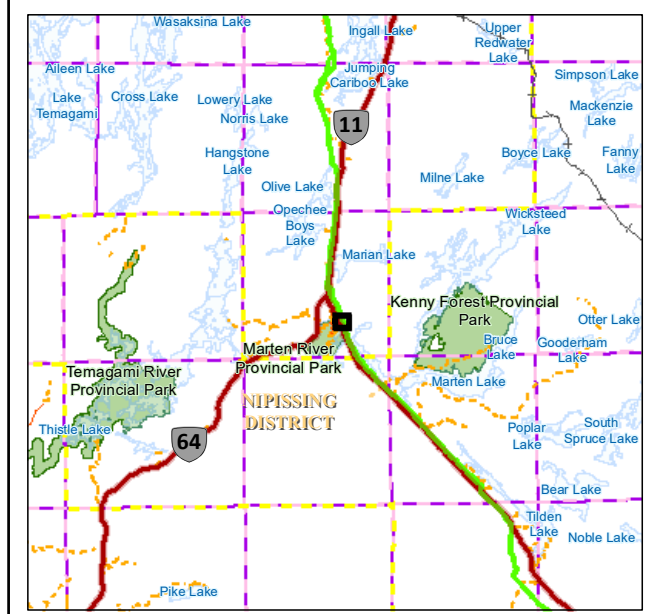
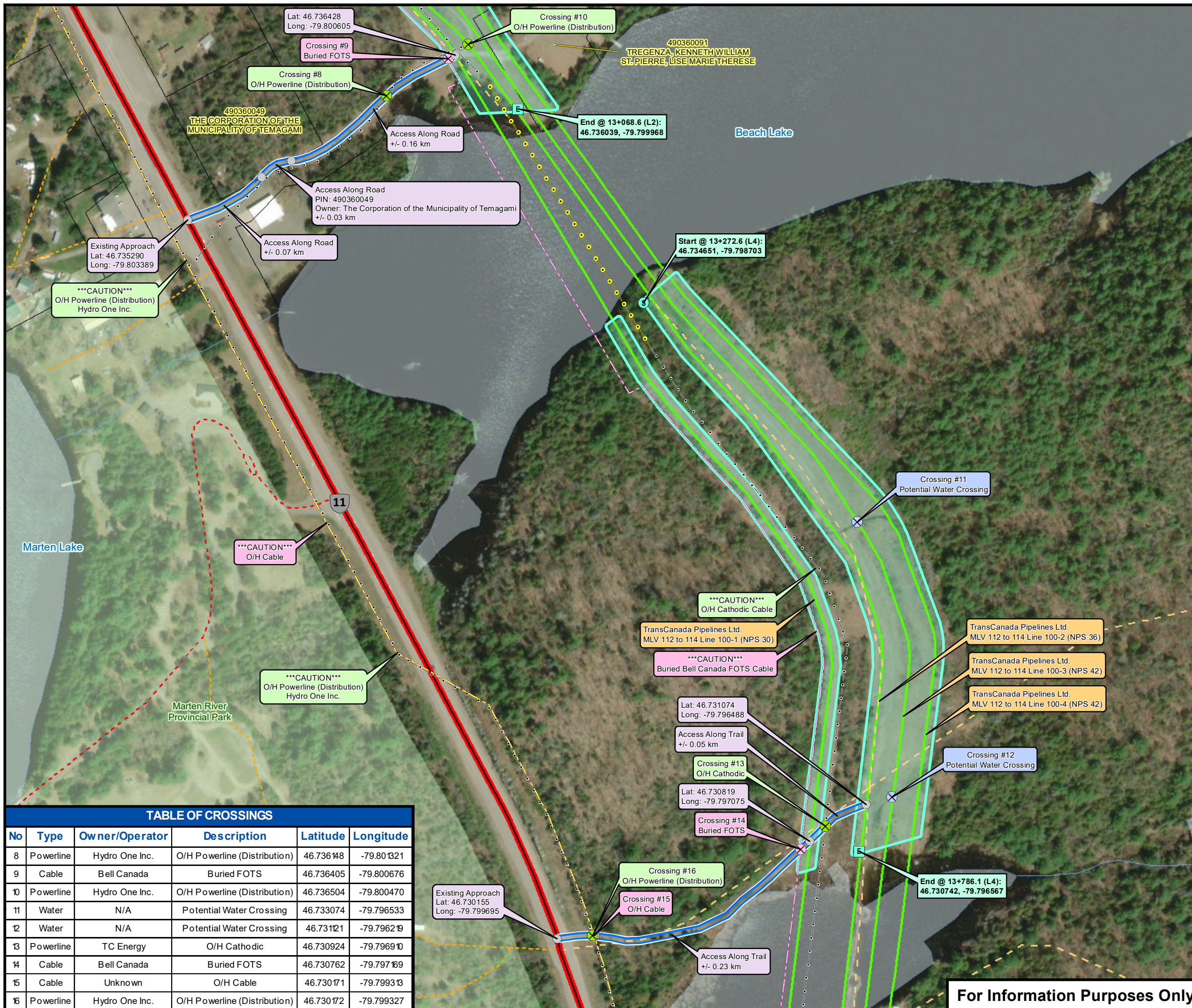
Job No.:
24-03961-011

Sheet
3 of 5

Revision
0

403-234-7599 / www.geoverra.com /
700, 540 - 12th Ave SW, Calgary, Alberta, T2R 0H4

The information contained herein is compiled from various government and industry sources, subject to copyright, and includes but is not limited to: Source: Esri, Maxar, Earthstar Geographics, and the GIS User Community, ©2024 DigitalGlobe, ©2024 Department of Natural Resources Canada, ©2024 Land Information Ontario (LIO), ©2024 King's Printer for Ontario. All rights reserved. GeoVerra Inc. and its data suppliers provide no warranty regarding the accuracy or completeness of this information and assume no liability for the interpretation or use thereof.



KEY PLAN SCALE: 1:500,000

LEGEND		
TC ACCESS INFORMATION	BOUNDARIES	TRANSPORTATION
Primary Access Route	Urban Area	Railway
Alternate Access Route	DND / Military	Highway
Access Route Start/End Point	Indian Reserve	Paved Road
Valve Site	Geographic Township	Gravel Road
Brushing/Spraying Start/End Point	UTM	Trail
Proposed Brushing/Spraying Area	LTM & STM	Overhead Powerline
Powerline Crossing	Park	Buried Powerline
Pipeline Crossing		TC Pipeline
Water Crossing		Foreign Pipeline
Cable Crossing		Buried Cable
Railway Crossing		Overhead Cable



**2024 N.ONT. BRUSHING/SPRAYING PROGRAM
ACCESS MAP FOR
MLV 112 TO 114 - 10.9km TO 14.6km
IN
SISK TOWNSHIP,
MUNICIPALITY OF TEMAGAMI,
NIPISSING DISTRICT**

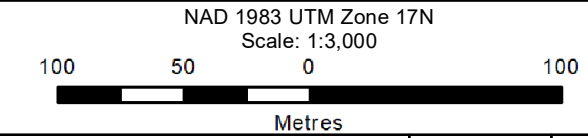


TABLE OF CROSSINGS					
No	Type	Owner/Operator	Description	Latitude	Longitude
8	Powerline	Hydro One Inc.	O/H Powerline (Distribution)	46.736148	-79.801321
9	Cable	Bell Canada	Buried FOTS	46.736405	-79.800676
10	Powerline	Hydro One Inc.	O/H Powerline (Distribution)	46.736504	-79.800470
11	Water	N/A	Potential Water Crossing	46.733074	-79.796533
12	Water	N/A	Potential Water Crossing	46.731121	-79.796219
13	Powerline	TC Energy	O/H Cathodic	46.730924	-79.796910
14	Cable	Bell Canada	Buried FOTS	46.730762	-79.797169
15	Cable	Unknown	O/H Cable	46.730171	-79.799313
16	Powerline	Hydro One Inc.	O/H Powerline (Distribution)	46.730172	-79.799327

Rev	Description	OR / CH / PM	Date
0	Original Issue	AS / JW / JW	Dec 11, 2024
-	-	-	-
-	-	-	-
-	-	-	-

GeoVerra File Name:
24-03961-011-AM-MLV112-114-10x9to14x6km-BrushSpray_R0

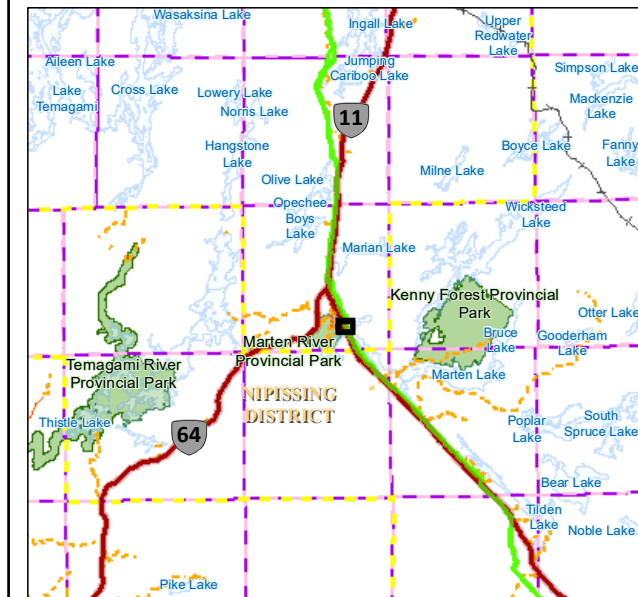
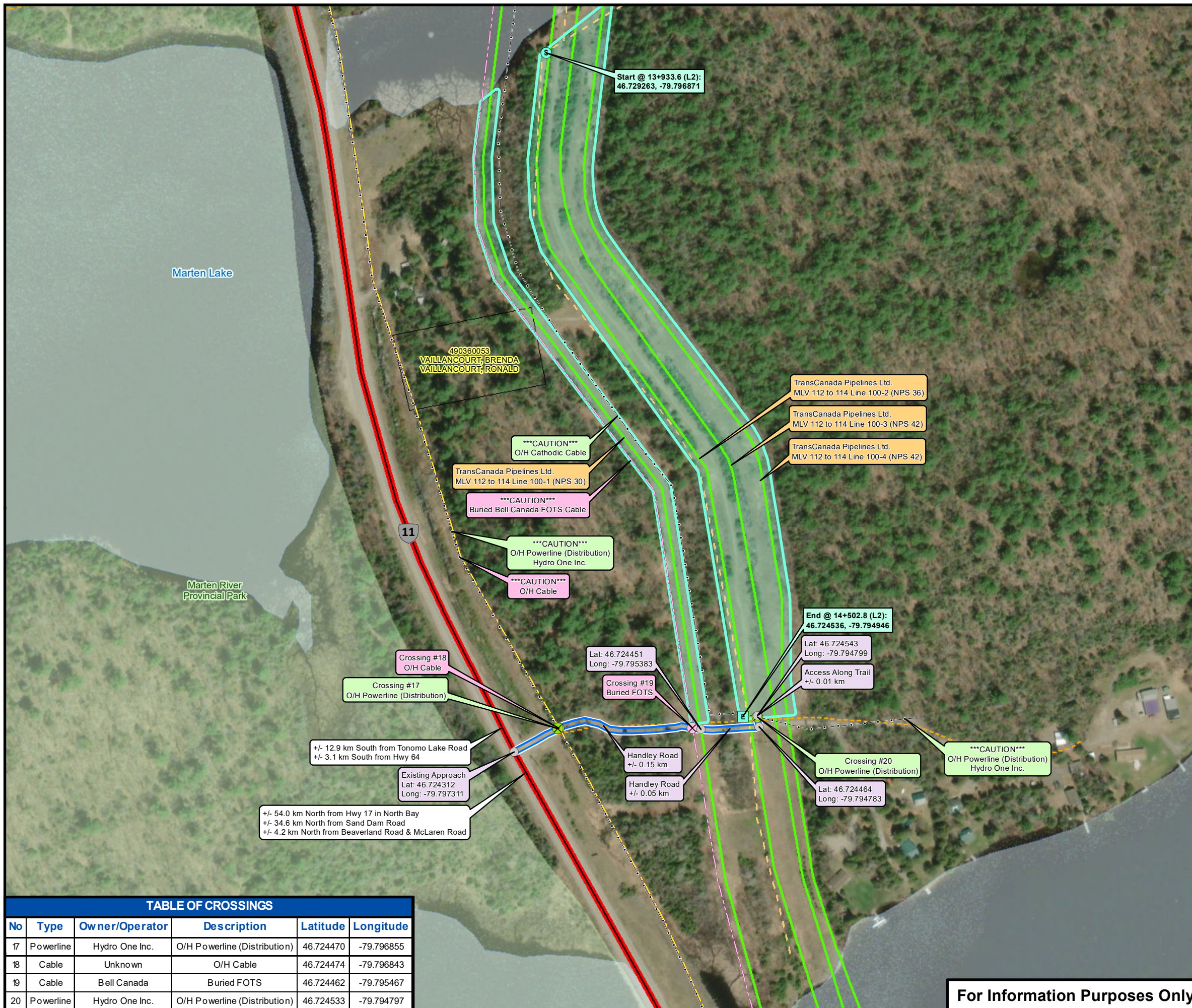
Client File Name:
E036840_MLV112-114_10x9to14x6km_BrushSpray_GV_AM_Rev0



Job No.:	24-03961-011
Sheet	4 of 5
Revision	0

For Information Purposes Only

The information contained herein is compiled from various government and industry sources, subject to copyright, and includes but is not limited to: Source: Esri, Maxar, Earthstar Geographics, and the GIS User Community. ©2024 DigitalGlobe; ©2024 Department of Natural Resources Canada; ©2024 Land Information Ontario (LIO); ©2024 King's Printer for Ontario. All rights reserved. GeoVerra Inc. and its data suppliers provide no warranty regarding the accuracy or completeness of this information and assume no liability for the interpretation or use thereof.



KEY PLAN SCALE: 1:500,000

LEGEND

TC ACCESS INFORMATION	BOUNDARIES	TRANSPORTATION
Primary Access Route	Urban Area	Railway
Alternate Access Route	DND / Military	Highway
Access Route Start/End Point	Indian Reserve	Paved Road
Valve Site	Geographic Township	Gravel Road
Brushing/Spraying Start/End Point	UTM	Trail
Proposed Brushing/Spraying Area	LTM & STM	Utilities
Powerline Crossing	Park	Overhead Powerline
Pipeline Crossing		Buried Powerline
Water Crossing		TC Pipeline
Cable Crossing		Foreign Pipeline
Railway Crossing		Buried Cable
		Overhead Cable



**2024 N.ONT. BRUSHING/SPRAYING PROGRAM
ACCESS MAP FOR
MLV 112 TO 114 - 10.9km TO 14.6km
IN
SISK TOWNSHIP,
MUNICIPALITY OF TEMAGAMI,
NIPISSING DISTRICT**

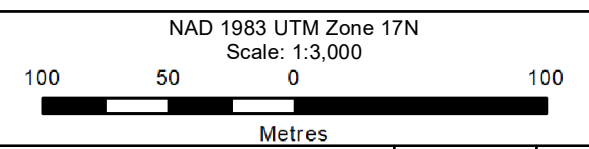


TABLE OF CROSSINGS

No	Type	Owner/Operator	Description	Latitude	Longitude
17	Powerline	Hydro One Inc.	O/H Powerline (Distribution)	46.724470	-79.796855
18	Cable	Unknown	O/H Cable	46.724474	-79.796843
19	Cable	Bell Canada	Buried FOTS	46.724462	-79.795467
20	Powerline	Hydro One Inc.	O/H Powerline (Distribution)	46.724533	-79.794797

Rev	Description	OR / CH / PM	Date
0	Original Issue	AS / JW / JW	Dec 11, 2024
-	-	-	-
-	-	-	-
-	-	-	-

GeoVerra File Name:
24-03961-011-AM-MLV112-114-10x9to14x6km-BrushSpray_R0

Client File Name:
E036840_MLV112-114_10x9to14x6km_BrushSpray_GV_AM_Rev0



Job No.: 24-03961-011	Sheet 5 of 5	Revision 0
--------------------------	-----------------	---------------

For Information Purposes Only

The information contained herein is compiled from various government and industry sources, subject to copyright, and includes but is not limited to: Source: Esri, Maxar, Earthstar Geographics, and the GIS User Community, ©2024 DigitalGlobe, ©2024 Department of Natural Resources Canada, ©2024 Land Information Ontario (LIO), ©2024 King's Printer for Ontario. All rights reserved. GeoVerra Inc. and its data suppliers provide no warranty regarding the accuracy or completeness of this information and assume no liability for the interpretation or use thereof.