

## **MUNICIPAL OPERATING AMENDING AGREEMENT**

**THIS AMENDING AGREEMENT No. 1** made effective April 1, 2025 (the “Effective Date”).

**BETWEEN:**

**ONTARIO NORTHLAND TRANSPORTATION COMMISSION  
 (“ONTC”)**

**AND:**

**THE CORPORATION OF THE MUNICIPALITY OF TEMAGAMI  
 (“Municipality”)**

**WHEREAS:**

- A. The parties entered into a municipal operating agreement dated August 1, 2024 (the “Agreement”).
- B. The parties wish to amend the location of the laydown area in Schedule “B”.

**IN CONSIDERATION OF** the rents, covenants and agreements, the parties agree as follows:

**DEFINITIONS**

- 1. Words or phrases defined in the Agreement shall have the same meaning in this Amending Agreement unless the context provides otherwise.

**AMENDMENTS TO AGREEMENT**

- 2. Schedule “B” is deleted in its entirety and replaced with the attached Schedule “B”.
- 3. Except as amended by the terms of this Amending Agreement, the remaining terms and conditions of the Agreement remain in full force and effect.

**[SIGNATURE PAGE FOLLOWS]**

**IN WITNESS WHEREOF** the parties have executed this Amending Agreement.

**ONTARIO NORTHLAND  
TRANSPORTATION COMMISSION**

Per: \_\_\_\_\_  
Jonathan Corley  
VP Rail Operations

Date: \_\_\_\_\_

*I have authority to bind the corporation.*

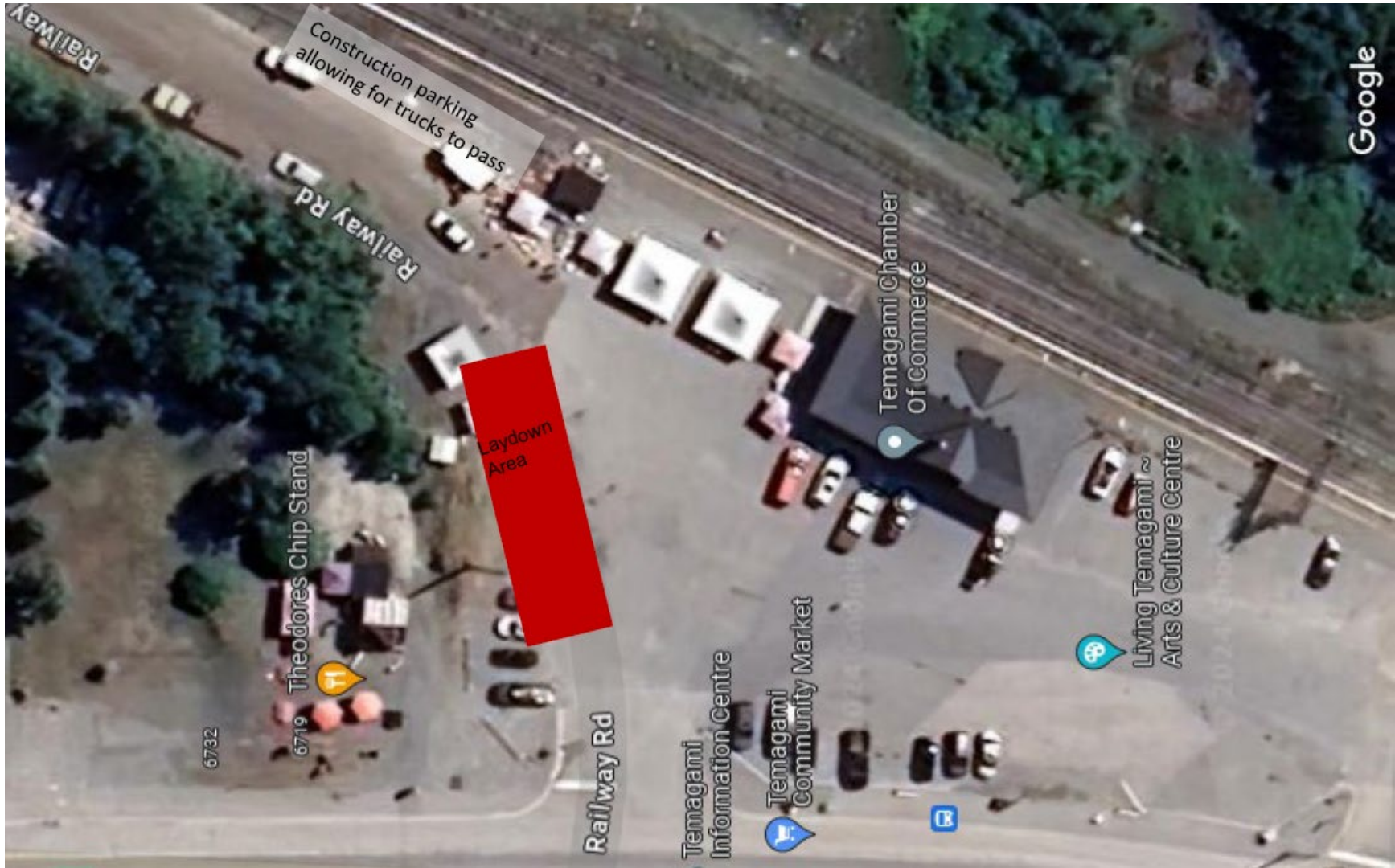
**THE CORPORATION OF THE  
MUNICIPALITY OF TEMAGAMI**

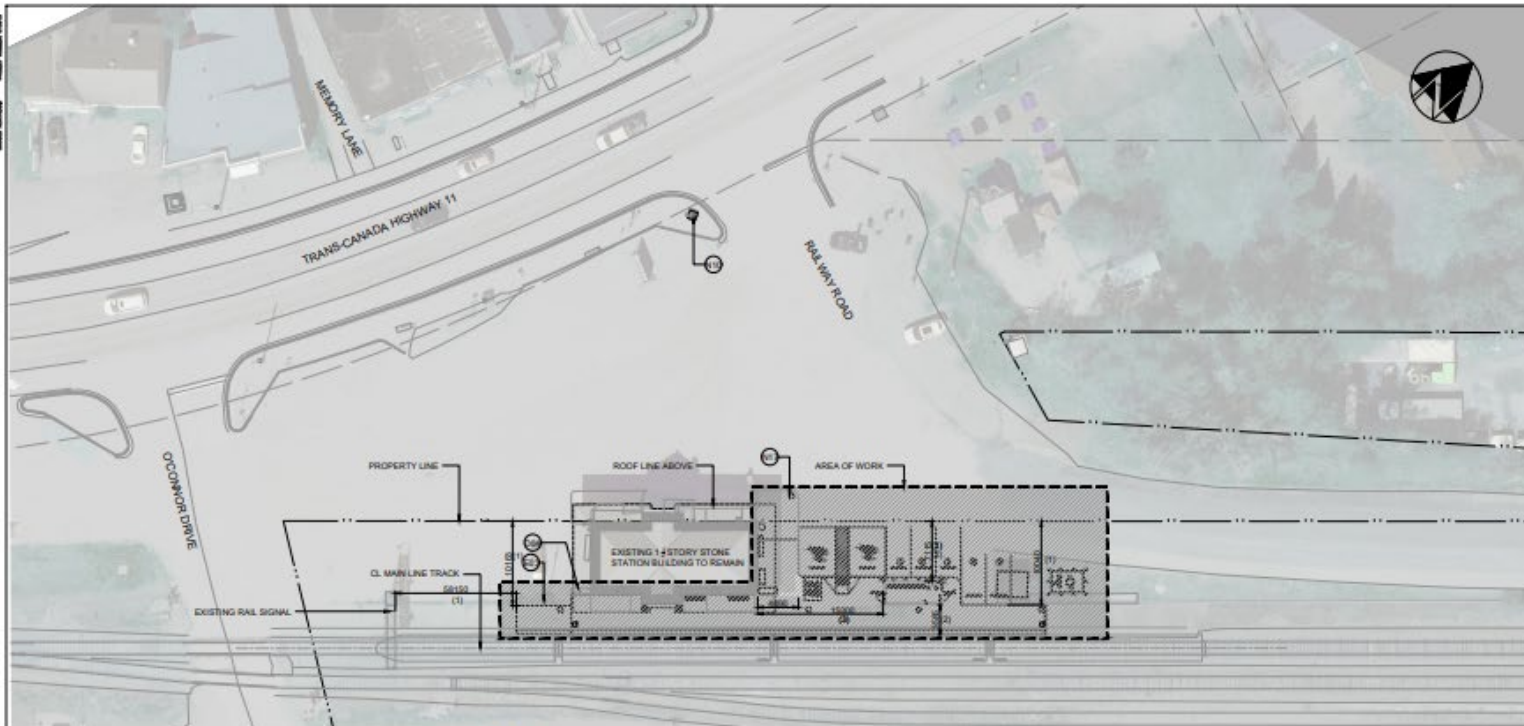
Per: \_\_\_\_\_  
Dan O'Mara, Mayor

Date: \_\_\_\_\_

*I have authority to bind the corporation.*

SCHEDULE "B"





**METRIC**  
ALL DIMENSIONS SHOWN ARE IN MILLIMETERS AND ELEVATIONS ARE IN METERS.  
(1) TO BE VERIFIED ON SITE.  
(2) TO FACE OF THE SHELTER'S CONCRETE CURB.  
(3) FACE OF THE BUILDING TO FACE OF THE SHELTER'S CONCRETE CURB.  
(4) SEE CIVIL DWGS FOR ELEVATIONS AND SLOPE.

**TEMAGAMI STATION  
SITE LAYOUT**



**REVISIONS**

**EXISTING:**

- E01 : EXISTING BENCHES TO REMAIN.
- E02 : EXISTING UTILITY CHAMBER.
- E03 : EXISTING FLAG POLES.
- E04 : EXISTING TRANSFORMER.
- E05 : EXISTING FENCE - TYP.
- E06 : EXISTING PLANTER TO REMAIN.
- E07 : EXISTING BOLLARDS - TYP.
- E08 : EXISTING SHED.

**DEMOLITION:**

- D01 : EXISTING BUILDING TO BE DEMOLISHED - SEE TO STRUCTURE DRAWINGS FOR DETAIL.
- D02 : EXISTING SHED TO BE DEMOLISHED BY OTHERS - SEE CIVIL DRAWINGS FOR DETAIL.
- D03 : EXISTING BENCHES TO BE REMOVED AND RETURNED TO ONT.
- D04 : EXISTING PLANTER TO BE REMOVED, STORED AND REINSTALLED AS NEEDED TO FACILITATE THE WORK.
- D05 : EXISTING RAMPS AND HANDRAILS TO BE DEMOLISHED.

**NEW:**

- N01 : CONCRETE PLATFORM WITH BROOM FINISH - SEE STRUCTURAL DRAWINGS FOR DETAILS AND CIVIL DRAWINGS FOR ELEVATIONS AND SLOPE.
- N02 : TACTILE EDGE - SEE DRAWING A00-002 FOR DETAILS.
- N03 : BARRIER-FREE PARKING SPACE - SEE CIVIL DRAWINGS - TYP.
- N04 : STANDARD PARKING SPACE - SEE CIVIL DRAWINGS - TYP.
- N05 : TWO BIKE STANDS - SEE DRAWING A00-002 FOR DETAILS.
- N06 : CONCRETE PAD AT TRANSITION BETWEEN EXISTING AND NEW PLATFORMS - SEE STRUCTURAL DRAWINGS FOR DETAILS AND CIVIL DRAWINGS FOR ELEVATIONS AND SLOPE.
- N07 : WASTE RECEPTACLES - SEE DRAWING A00-003 FOR DETAILS.
- N08 : SMOKERS RECEPTACLES - SEE DRAWING A00-003 FOR DETAILS.

**N09 : PRE-MANUFACTURED PASSENGERS' SHELTER - TO BE INSTALLED BY GENERAL CONTRACTOR.**

- GENERAL CONTRACTOR TO COORDINATE SITE PREPARATION AND INSTALLATION REQUIREMENTS WITH SHELTER'S MANUFACTURER.
- N10 : ONT. BACKLIT TOTEM - SEE SIGNAGE DRAWINGS FOR DETAILS.
- N11 : END OF PLATFORM SIGN - SEE SIGNAGE DRAWINGS FOR DETAILS.
- N12 : NEW BENCHES - BY OTHERS.
- N13 : ASPHALT SIDE WALK - SEE CIVIL DRAWINGS FOR DETAILS.
- N14 : GUARDRAIL - SEE DRAWING A10-701 FOR DETAILS.
- N15 : AUTOMATIC DOOR OPERATOR PUSH BUTTON - TO BE INSTALLED ON THE SIDE OF SHELTER CLOSE TO THE BARRIER-FREE PARKING - TO BE COORDINATED WITH THE SHELTER MANUFACTURER.
- N16 : CURB CUT AT BARRIER-FREE PARKING - SEE CIVIL DRAWINGS FOR DETAILS.
- N17 : LIGHT POLES - SEE ELECTRICAL DRAWINGS FOR DETAILS.

**N18 : ELECTRICAL AND COMMUNICATION PANELS - SEE ELEC. & COMM. DRAWINGS FOR DETAIL.**

- N19 : TYPE 01, SAFETY STAINLESS STEEL BOLLARD - SEE DRAWING A00-004 FOR DETAILS.
- N20 : CONCRETE RAMP WITH BROOM FINISH - SEE STRUCTURAL DRAWINGS FOR DETAILS.
- N21 : ACCESS GATE - SEE DRAWING A10-701 FOR DETAILS.
- N22 : 300mm WIDE PAINTED CONCRETE EDGE - YELLOW COLOUR - SEE SPEC FOR DETAILS.
- N23 : NEW CONCRETE UP STAND - SEE DRAWING A00-003 AND STRUCTURAL DRAWINGS FOR DETAILS.
- N24 : TYPE 02, SAFETY CONCRETE FILLED GALVANIZED STEEL BOLLARD WITH STAINLESS STEEL COVER - SEE DRAWING A00-004 FOR DETAILS.

**IFT DESIGN  
NOT FOR CONSTRUCTION**

NO.	DATE	DESCRIPTION	DESIGN	CHECK	APPROVED	NO.	DATE	DESCRIPTION	DESIGN	CHECK	APPROVED

DESIGNED	JD
DRAWN	NM
CHECKED	SA
APPROVED	JD



**NORTHEAST PASSENGER RAIL SERVICE  
ONTARIO, CANADA  
REINSTATED STATIONS (PACKAGE 1 & 2)**

TEMAGAMI STATION  
ARCHITECTURAL  
SITE LAYOUT

CONTRACT NUMBER	13358
SCALE	1:250
DATE	03/18/2024
DRAWING NUMBER	A07-001
SHEET	51
OF	173